

Worcester, Bosch Group, Cotswold Way, Warrndon, Worcester WR4 9SW.
Telephone: 01905 754624 Fax: 01905 753130.
Technical Helpline 08705 266241.



www.worcester-bosch.co.uk

CORGI CONTACT
All CORGI Registered installers carry a CORGI ID card and have a registration number. Both should be recorded in your central heating log book. You can check your installer is CORGI Registered by calling CORGI on 01256 372300

FOR YOUR OWN RECORD

MODEL SERIAL NUMBER

(See identity label inside appliance casing)

TYPE/SIZE DATE OF INSTALLATION

IMPORTANT: SERIAL NUMBER. Copy the number off the Guarantee Card.

You should complete and return the postpaid Guarantee Registration Card within 30 days of purchase. The card will register you as the owner of your new Worcester 26CDi Xtra appliance and, while this will not affect your statutory rights in any way, it will assist us to maintain an effective and efficient customer service by establishing a reference and permanent record for your boiler.

GUARANTEE REGISTRATION

MAINTAINING YOUR APPLIANCE

Your new Worcester 26CDi Xtra gas-fired appliance represents a long-term investment in a reliable, high quality product.

In order to realise its maximum working life, and to ensure it continues to operate at peak efficiency and performance, it is essential that your boiler receives regular, competent servicing and annual maintenance checks beyond the initial 12 month



guarantee period.

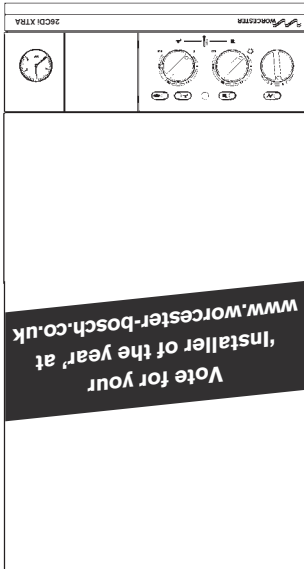
Regular service contracts can be arranged with your installer – however if you have difficulty making a satisfactory arrangement simply contact Worcester on 01905 75624 for help.

USER INSTRUCTIONS & CUSTOMER CARE GUIDE

G. C. NUMBERS,
NATURAL GAS,
L. P. G.
47 311 41
47 311 42



26CDi XTRA



Worcester
Bosch Group

IMPORTANT: THIS APPLIANCE IS FOR USE WITH NATURAL GAS OR LPG. THESE INSTRUCTIONS APPLY IN THE UK ONLY.
THESE INSTRUCTIONS ARE TO BE LEFT WITH THE USER OR AT THE GAS METER

Hot Water Mode:

The appliance operates to supply only domestic hot water when the heating temperature mode is fully anti-clockwise, at the off position or the timer is programmed to OFF mode.

When a demand is made for hot water by opening a tap or shower, the flow switch will energise the pump and circulate primary hot water around the boiler and water to water heat exchanger. The burner will light at its maximum setting.

When hot water is no longer required the appliance pump and fan may continue to operate to dissipate the residual heat within the boiler.

A flow restrictor is fitted within the appliance which limits a hot water delivery rate to a maximum of 9.0 (±15%) litres/minute (2.0 gallons/minute).

Hot Water and Central Heating mode:

When a demand is made for heating by the system controls (i.e. a programmer or room thermostat), the pump will energise circulating primary water around the heating system and the burner will light. The heat output from the appliance in this mode has been factory set to maximum. The appliance will operate as necessary to maintain the temperature of the radiators at the level set by the adjustment of the Heating Temperature Control Knob. (See Fig. 3.)

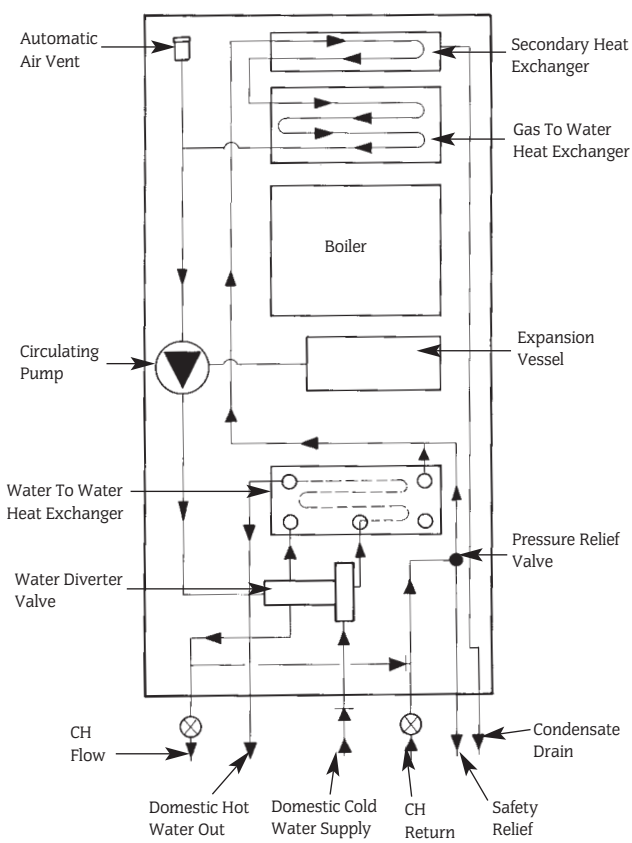
If the system no longer requires output to maintain the desired room temperature, the burner will extinguish. The pump will continue to run for a short period to dissipate the residual heat from the appliance and then switch off.

The pump will run for the duration of the demand and only shut off if the room thermostat or programmer is satisfied.

The appliance will supply heat to the central heating system as required. A demand for hot water at a tap or shower will override the central heating function for the period of the domestic hot water demand.

NOTE: If in doubt about the use of the controls ask your installer to assist you.

Fig. 1. Appliance Water Flow Diagram.



Worcester, Bosch Group is a trading name of BBT Thermotechnology UK Ltd.

This guarantee is given in addition to all your normal statutory rights.

1. The appliance is guaranteed for a period of 24 calendar months subject to the return of the guarantee card within 30 days of installation and the first 12 months service and inspection having been carried out to the satisfaction of BBT Thermotechnology UK Ltd. Please note that this service is not covered under the terms & conditions of the warranty and would therefore incur a charge.
2. That during the period of this guarantee any components of the unit which are proved to be faulty or defective in manufacture will be exchanged or repaired free of material charges and free of labour charges if repaired directly by BBT Thermotechnology UK Ltd. Invoices for attendance and repair of this appliance by third parties will not be accepted for payment by BBT.
3. That the householder may be asked to prove the date of installation and
4. That any product or part thereof returned for servicing under the guarantee must be accompanied by a claim stating the model, serial number and date of installation.
5. That BBT Thermotechnology UK Ltd will not accept responsibility for damage caused by faulty installation, neglect, misuse, accidental damage or the non-observance of the instructions contained in the installation and Users instructions leaflets.
6. That the appliance has been used only for normal domestic purposes, for which it was designed.
7. That this guarantee applies only to equipment purchased and used in mainland Great Britain.

This appliance is guaranteed from the date of installation subject to the following conditions & exceptions.

YOUR WORCESTER 26CDi XTRA GUARANTEE

SERVICE CENTRES

CONTACT NUMBERS:

UK Contact Centre	Tel.	08457 256 206
UK Contact Centre	Fax.	01905 757536
Scotland only	Fax.	01506 441 687
Eire	Tel:	01 494 0099

OPERATING HOURS:

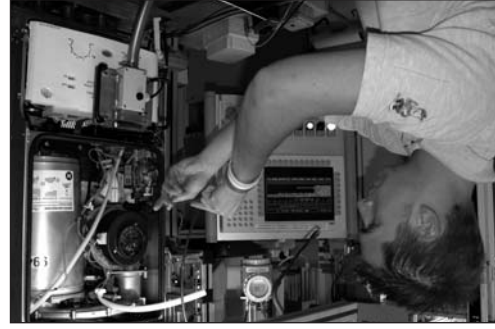
Mon - Fri	7.00am to 8.00pm
Sat	8.00am to 5.00pm
Sun	9.00am to 12.00pm

Please contact our UK Contact Centre number where our friendly operators will book your call with one of our team of nationwide engineers.

NOTE:

Please refer to our website for our bank holiday opening hours.

www.worcester-bosch.co.uk



CONTENTS	
Page No.	
Operating Instructions	3-11
Fault and Breakdowns	12
Maintenance and Extended Warranty	13-14
Guarantee Details	15-16

What's more, you also have the assurance of our no-nonsense 1 year parts and labour guarantee. And, to keep your boiler operating at peak condition and efficiency, an optional maintenance scheme is available from Worcester. Contact our Service Contracts Team on 01905 754624 for further details.



The result is that your new Worcester 26CDi Xtra appliance offers you the very best of everything - quality, efficiency, economical running costs, proven reliability and value for money.

Indeed, Worcester, part of the Bosch Group have led the field in innovative appliance design and performance for more than 40 years. The result is that your new Worcester 26CDi Xtra appliance offers you the very best of everything - quality, efficiency, economical running costs, proven reliability and value for money.

EXCELLENCE COMES AS STANDARD

GENERAL INFORMATION

GAS SAFETY (INSTALLATION AND USE) REGULATIONS 1998

It is the law, in GB, that all gas appliances must be installed by a competent person in accordance with the above regulations. Failure to install appliances correctly could lead to prosecution. It is in your interest and that of safety to ensure compliance with the law. The manufacturer's notes must not be taken, in any way, as over-riding statutory obligations.

In GB, a competent person is someone registered with CORGI. All CORGI registered installers carry a CORGI ID card and have a registration number. Both should be recorded in the BENCHMARK checklist. You can check that your installer is CORGI registered by calling CORGI on 01256 372300.

WARNING: This appliance must be earthed and protected by a 3 amp fuse.

ELECTRICITY SUPPLY: 230V ~ 50Hz

IMPORTANT: To get the best from your Worcester 26CDi Xtra please read these instructions carefully.

NOTE: In the event of a fault the appliance should not be used until the fault has been corrected by a competent person.

BENCHMARK

The Benchmark initiative is a code of practice to encourage the correct installation, commissioning and servicing of domestic central heating boilers and system equipment.

A checklist can be found in the back of every installation manual. **This is a vital document that needs to be completed by the installer at the time of installation. It confirms that the boiler has been installed and commissioned according to the manufacturers instructions.**

In Eire the declaration found in IS 813 must be completed. Without completion of the checklist and/or declaration, manufacturers may refuse to respond to a call-out request. It is important that the checklist and/or declaration are fully completed by your installer.

GENERAL DESCRIPTION

(See Fig.1.)

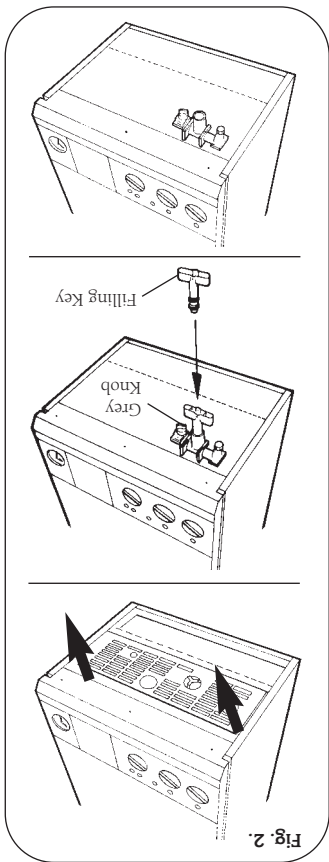
The WORCESTER 26CDi Xtra is a condensing, combined domestic hot water and central heating appliance. It consists of a gas fired boiler with a secondary, high efficient heat exchanger, having a varying output of between 6.7 kW and 26 kW. A water to water heat exchanger to provide domestic hot water via the boiler, circulating pump and water diverting valve. All the necessary controls to provide mains fed domestic hot water and central heating.

The appliances are supplied as standard with a manual operating switch. Alternatively a fascia mounted programmer may have been fitted.

The appliance can operate in one of two modes. Hot water only or hot water and central heating.

PLUMING: Because the appliance operates at high efficiency a white plume of condensate will be emitted from the flue terminal which is fitted outside the dwelling. The pluming will be more noticeable during cooler weather and will occur every time the appliance is used.

Remove the bottom panel to gain access to the filling loop assembly. Insert the bayonet end of the filling key into the corresponding cut outs in the filling loop housing and twist to lock the key in place. Turn the grey knob anti-clockwise to allow water to enter and fill until the required pressure is reached. Turn the grey knob clockwise to stop filling and remove. Remove the filling key by lining up the bayonet end of the key with the cut outs in the filling loop housing and withdrawing the key. **N.B. The key must always be removed from the filling loop housing after the system has been filled to prevent accidental filling and to comply with Bylaw 14 of the Water Bylaws Scheme.** Store the key in a safe place for future use and refit the bottom panel.



Pressurising The System (See Fig. 2). **(If in doubt leave this procedure to your installer.)** Remove the bottom panel to gain access to the filling loop assembly. Insert the bayonet end of the filling key into the corresponding cut outs in the filling loop housing and twist to lock the key in place. Turn the grey knob anti-clockwise to allow water to enter and fill until the required pressure is reached. Turn the grey knob clockwise to stop filling and remove. Remove the filling key by lining up the bayonet end of the key with the cut outs in the filling loop housing and withdrawing the key. **N.B. Maximum pressure 2.5 bar.**

SEALED HEATING SYSTEM

The appliance will be fitted to a sealed heating system which is pre-pressurised. Your installer will advise you on the minimum and maximum pressure that should be indicated on the pressure gauge. See Fig. 3. Check regularly that this pressure is maintained and contact your installer or maintenance engineer if there is a permanent significant drop in pressure indicated on the gauge. If the system loses pressure it should be re-pressurised as instructed by the installer (N.B. Maximum pressure 2.5 bar).

CENTRAL HEATING SYSTEM

During the first few hours of operation of the central heating system, check that all radiators are being heated at an even rate. Should the upper area of a radiator be at a lower temperature than the base of the radiator, it should be vented by releasing air through the venting screw at the top of each radiator. Make sure your installer shows you how to carry out the operation. Repeated venting will reduce the quantity of water in the system and this must be replenished for safe and satisfactory operation of the appliance. Should water leaks be found in the system or excessive venting be required from any radiator, your installer or heating engineer should be contacted and the system corrected.

GENERAL NOTES

OPERATION OF CONTROLS

(See also label on inside of appliance front cover).

The appliance is fitted with the following controls:
See fig. 3.

OPERATING SWITCH

In the '0' position there is no mains electricity to the appliance.

In the 'I' position mains electricity is connected to the appliance.

CENTRAL HEATING TEMPERATURE CONTROL

The position of this knob will determine the temperature of the water delivered to the radiators between the 'I' and 'MAX' position. When the knob is turned anti-clockwise past the 'I' position towards the '☀' (Summer Position), then the appliance will operate in the HOT WATER mode only and no heat will be delivered to the radiators.

DOMESTIC HOT WATER TEMPERATURE CONTROL

The position of this knob will determine the temperature of the water delivered at the domestic hot water taps between the '0' and the 'MAX' position.

By slightly reducing the flow of domestic water from the tap, the delivery temperature of the water will be further increased. This is of particular advantage in the winter, for example to increase bath water temperature. Also this will provide an added advantage of reducing the delay before hot water is obtained.

FACIA MOUNTED PROGRAMMER (if fitted)

Your installer may have mounted either a mechanical or an electronic programmer into the fascia of your appliance. Operating instructions are supplied with the programmer.

RESET BUTTON

Press this button in for five seconds if any of the indicator lights are flashing.

SYSTEM PRESSURE GAUGE

The red needle has been set to show the sealed system pressure which is required for the appliance to operate effectively. The grey needle will show the actual pressure in the system.






APPLIANCE FAILS TO OPERATE

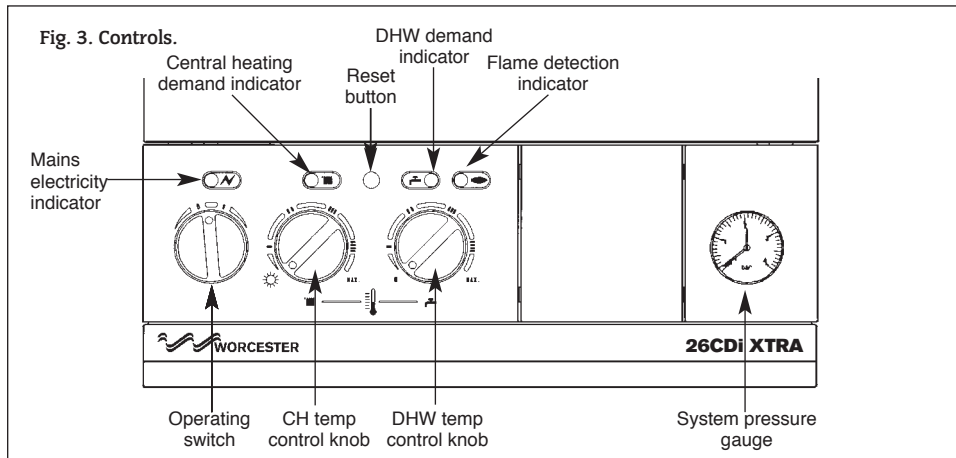
All of our field service engineers are factory trained. If you request a visit from an engineer and your appliance has been installed within the last 12 months, no charge will be made for parts and/or labour, providing:
• The appliance was commissioned correctly on installation.
• An appliance fault is found and the appliance has been installed within the past 12 months.
A call-out charge will be made where:
• The appliance has been installed for over 12 months, or
• Our Field Service Engineer finds no fault with the appliance (see note), or
• The cause of breakdown is with other parts of your plumbing/heating system, or with equipment not supplied by Worcester.
NOTE: Invoices for attendance and/or repair work carried out on your appliance by any third party will not be accepted.

CALL-OUT CHARGES

A diagnostic system is provided which gives a flashing light display on the fascia panel. Press the reset button to attempt to restart the appliance. If the appliance does not return to normal operation then contact your installer/engineer or Worcester Bosch advising of the appliance serial number and the flashing light sequence, i.e. which lights flash and at what speed. More than 30% of all calls made to our contact centre reporting appliance faults or breakdowns prove to be false alarms, as there is often a simple explanation for the apparent malfunction. So, to help you save time and money – not to mention frustration and inconvenience – please refer to the General Information, Notes and Lighting Instructions ensuring all controls are set correctly. If, after following the instructions the appliance still fails to operate correctly call the Worcester Contact Centre on 08457 256206. Arrangements will be made for an engineer to call as soon as possible. If it is known or suspected that a fault exists on the appliance it must not be used until the fault has been corrected by a competent person.

INDICATOR LIGHTS

-  **Mains electricity indicator:**
OFF : No mains electricity to the appliance
ON : Mains electricity is connected to the appliance
-  **Central heating demand indicator:**
OFF : No demand for heat to the central heating circuit
ON : Central heating demand
FLASHING SLOW (once per second) : Ignition lockout
FLASHING FAST (five times per second) : Appliance fault (other than ignition lockout)
-  **Domestic hot water demand indicator:**
OFF : No demand for domestic hot water
ON : Domestic hot water demand
FLASHING FAST (five times per second) : Air flow fault.
-  **Central heating and domestic hot water demand indicators:**
BOTH FLASHING SLOW (once per second) : Overheat cut-off
-  **Flame detection indicator:**
OFF : Burner off
ON : Burner on



Normally there is no need for scale protection. However, in areas of exceptionally hard water supply it is recommended that an In-Line scale inhibitor be fitted.

Installation should be strictly in accordance with the requirements of the local Water Company. An isolating valve to facilitate servicing should be incorporated.

The water hardness may be determined using the standard test paper or by reference to the local Water Company.

Further information may be obtained from Worcester Bosch Technical Helpline.

USE IN HARD WATER AREAS

It is important to note that in the event of a mains water supply failure, no tap water will be available until the mains supply is restored. The appliance can still be used for heating because it is fitted to a sealed system.

WATER MAINS FAILURE

If the flow of water demanded from both hot and cold service outlets is dependent upon mains supply, it may not be possible in some installations to operate all outlets simultaneously.

HOT AND COLD FLOW

Hot and cold mains fed water can be supplied direct to an overrim flushing bidet subject to local water company requirements. With all mains fed systems the flow of water from the individual taps will vary with the number of outlets operated simultaneously and the cold water mains supply pressure to the property. Flow balancing using 'Ball-o-Fix' type valves is recommended to avoid an excessive reduction in flow to individual outlets.

For further information contact the Worcester Technical Helpline.

VALVES

Standard hot and cold taps and mixing valves used with the appliance must be suitable for operating at mains pressure. Thermostatically controlled shower valves will guard against the flow of water at too high a temperature.

SHOWERS, BIDETS, TAPS AND MIXING

If thermostatic radiator valves are fitted to the system then they must conform to the requirements of BS2767. The radiator located in the room where the room thermostat is sited must be controlled by a thermostatic radiator valve.

THERMOSTATIC RADIATOR VALVES

A room thermostat may be fitted for control of the central heating temperature. It will be located in one room of the home. The method of setting a room thermostat varies with the type and manufacture. Refer to the instructions supplied with the room thermostat.

ROOM THERMOSTAT

Your installer will have provided adequate space around the appliance for safety and servicing. Do not restrict this space by the addition of cupboards, shelves etc. close to the appliance.

Minimum clearances in millimetres:

POSITION	CLEARANCE
Left-hand side	10
Right-hand side	10
In Front	600
Above	180
Below	200

CLEARANCES

VENTILATION OF ROOM SEALED FANNED FLUE (RSF) APPLIANCES

This is a room sealed appliance and any ventilation openings in a wall or door must not be obstructed. Do not allow the flue terminal fitted on the outside wall to become obstructed or damaged.

NOTE: Do not place anything on top of the appliance. If the appliance is fitted in a compartment do not use the compartment for storage purposes unless it conforms to the requirements of BS 6798:1987: Section 6. It is essential that the airing space is separated from the boiler space by a perforated non-combustible partition as described in BS 6798:1987.

CIRCULATING PUMP

This may be fitted with a speed adjuster. If so it will be factory set at maximum and should not be changed.

FROST PRECAUTIONS

If the appliance is not to be used for a long period of time and there is a likelihood of freezing, then the appliance should be drained. The Worcester Technical Helpline will advise you on suitable frost precautions. For short periods the built-in frost protection of the appliance will be adequate.

SERVICE

Annual servicing is important in order to ensure continuing high efficiency and long life for your appliance. In the event of any difficulty in making suitable servicing arrangements, Worcester personnel or other competent persons will be happy to discuss regular servicing arrangements and offer a comprehensive maintenance contract.

WARNING

If a gas leak exists, or is suspected, turn off the gas supply to the appliance at the service cock and consult your local service engineer.

Do not touch any electrical switches to turn them either on or off. Open all windows and doors. Do not smoke. Extinguish all naked lights.

CLEANING

Do not use abrasive cleaners on the outer casing. Use a damp cloth and a little detergent.

CONDENSATE DRAIN

Your installer will have provided a plastic condensate drain pipe from the appliance.

The pipe should discharge into the household drainage system, outside gully or soak away.

REMOVAL AND REPLACEMENT OF THE FRONT PANEL (See Fig. 4)

Removal: Holding the panel at the edges, slide it upwards to disengage the clips and ease the top edge forwards and upwards to raise it clear of the two pegs on the top edge of the fascia.

Replacement: Locate the two holes in the bottom edge of the front panel over the two pegs on the top edge of the fascia.

AIR FLOW DEVICE

The appliance will enter a lockout condition in the event of an air flow fault.

If the controls fail to detect the correct air flow through the appliance the electricity supply to the gas valve will be interrupted. If an air flow fault has occurred, the domestic water demand indicator will flash (approximately five times per second). The appliance will try to re-light after a waiting period of approximately 4 minutes. Check that the flue terminal has not been obstructed or damaged, and the condensate drain pipe is not blocked outside with debris.

If this condition continues to occur, then call a service engineer.

IGNITION LOCKOUT

The appliance will enter a lockout condition in the event of the burner failing to ignite.

If the burner fails to light within a preset time of 10 seconds the electricity supply to the gas valve will be interrupted. If ignition lockout has occurred, the central heating demand indicator will flash slowly (approximately once per second). The appliance can be reset by pressing the reset button and holding in for 5 seconds. Check that the gas supply has not been interrupted.

If this condition continues to occur, then call a service engineer.

The appliance can be reset by pressing the reset button and holding in for 5 seconds.

TO LIGHT AND STOP THE APPLIANCE

TO LIGHT THE APPLIANCE

Check that the water valves to the central heating circuit are open. Check that the grey needle on the pressure gauge is not below the required pressure.

Switch on the mains electricity. The green power on indicator will light. Set the room thermostat, if fitted, to maximum. Turn the central heating temperature control knob to 'MAX'. The red central heating demand indicator will light.

The burner will light and the red flame detection indicator will light. Set the central heating and hot water temperature control knobs and the room thermostat, if fitted, to the desired temperature.

TO STOP THE APPLIANCE

For Short Periods

Turn the central heating temperature control knob fully anti-clockwise to the 'O' position.

For Long Periods

Turn the operating switch to the 'O' position. Switch off the mains electricity.

A fascia mounted electronic programmer will retain its settings for about two weeks, after which it will return to the factory set programme. The display will disappear after approximately 12 hours.

A fascia mounted mechanical programmer will require resetting once the operating switch has been set to 'O', or the mains supply has been disconnected.

ELECTRICITY SUPPLY FAILURE

If the electricity supply fails the appliance will not operate. Once the supply is restored the appliance will return to normal operation. If a programmer is fitted, check that the settings have been maintained.

OVERHEAT CUT-OFF THERMOSTAT

The appliance will enter a lockout condition in the event of overheating.

An overheat cut-off thermostat is fitted to the appliance which will interrupt the electricity supply to the gas valve.

If the overheat cut-off has operated, both the central heating and the hot water demand indicators will flash together.

Fig. 4. 26CDi Xtra with front panel removed.

