

Heating

Before switching the heater on, please ensure the fascia grille is free from obstruction.

Ensure your fused spur is switched **ON**. Set the thermostat (if fitted) to the desired temperature. Set the upper fan switch and the middle 1kW switch to **ON**. If you require a faster warm up set the lower 2kW switch to **ON**.

To turn the heater off, set the fan switch to **OFF**. Please note all switches must be in the **ON** position to achieve 2kW heat output.

For your safety this Space Saver heater is fitted with automatic overheat protection. If the heater stops, turn off the power at the fused spur, wait 5 minutes and switch the power back on.



Air Circulation (summer use)

Set the thermostat (if fitted) to maximum. Set the fan switch to **ON**. Ensure the 1kW and 2kW switches are **OFF**. Space Saver will provide a cooling flow of air.

Fault Finding

This Space Saver is covered by a **free 5-year parts and labour guarantee**. Please refer to the Fault Finding section on page 17 for advice. In the event of difficulty, please contact us on 01245 324560.



Products with this symbol (crossed out wheeled bin) cannot be disposed as household waste. Old electrical and electronic equipment must be recycled at a facility capable of handling these products and their waste by-products. If you are purchasing replacement equipment your retailer may offer a 'take back' scheme, or will be able to give details of the nearest approved authorised treatment facility. Proper recycling and waste disposal will help conserve resources whilst preventing detrimental effects on our health and the environment.

WEEE Registered Code:

WEE/ED0093VW

This appliance is not intended for use by persons (including children) with reduced physical, sensory or mental capabilities, or lack of experience and knowledge, unless they have been given supervision or instruction concerning use of the appliance by a person responsible for their safety. Children should be supervised to ensure that they do not play with the appliance.



Smith's Environmental Products Ltd,

Blackall Industrial Estate, South Woodham Ferrers, Chelmsford, Essex, CM3 5UW

Tel: 01245 324900 Fax: 01245 324422

Sales E-mail: sales@smiths-env.com General Information E-mail: info@smiths-env.com Web: www: smiths-env.com

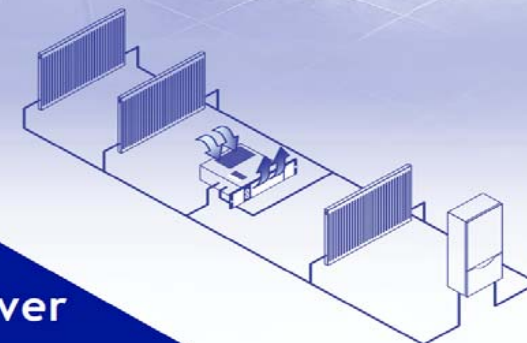
For Ireland, contact MT Agencies (Ireland) Ltd on Tel: 00353 1 844 3212

SS2E W

Space Saver

Installation and User Guide

Discover the hidden benefits



Space Saver

SS2E W

The following items should be included in the carton:

- ❖ Product complete with fixed white grille and pre-wired mains cable.
- ❖ Fixing screws (2).

Overlay grilles which fit over the fixed white grille are available in different colours and finishes. Please consult the price list for details. In the event of items missing or visible damage, please contact us on 01245 324560.

We would be most grateful if you would leave this Installation & User Guide and the Guarantee Registration Card with the owner of the property.

Space Saver is primarily intended for installation in the space beneath kitchen cupboards behind the plinth. However, it can also be installed in similar applications such as stair risers and other built-in furniture.

This Space Saver model must not be installed in a bathroom or other high humidity areas. Please contact us on 01245 324560 for details of products suitable for these applications.

Space Saver is classified as a fixed appliance and electrical connection should be via a 10A double pole fused spur with a minimum contact gap of 3mm. The fused spur must not be directly above the heater but should be accessible after completion of the installation. If the pre-wired mains cable is damaged, it must be replaced by either the manufacturer, its service agent or similarly qualified persons. The appliance must be earthed.

To ensure adequate airflow, a minimum clearance

of 20mm between the top of the product and any shelving is essential.

To avoid the possibility of vibration, this product must be installed on a flat, even surface.

There must be **no** rear access to the product after completion of the installation.

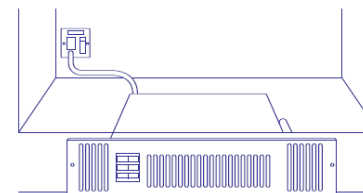
To conform with Building Regulations Part L (Part J in Scotland), a remote room thermostat (Smith's Part No. RT002) can be used in conjunction with this Space Saver fan convector.

Space Saver is fitted with overheat protection. The heater will automatically stop in the event of the heating elements reaching the cut out temperature.

In the event of any difficulty please contact us on 01245 324560.

Please note the guarantee may be invalidated if this product is not installed and used in accordance with this guide.

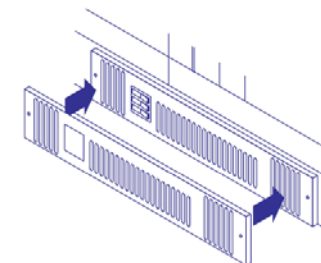
2. Isolate the electrical supply and connect the heater electric cable to the 10A fused spur. The fused spur must not be directly above the heater, but should be accessible after completion of the installation.



3. Position the heater, making sure the electrical cable is not snagged.
- 4a. Fix heater to the plinth.



- 4b. If required fit the overlay grille. Remove the screws holding the fixed grille to the plinth, place the overlay grille over the fixed grille and refit the screws.



Fault Finding

1. Fan does not run/no heat output.
 - a. Check the power supply is switched ON.
 - b. Check fuse in the fused spur.
 - c. Check the fan switch is ON.
2. If the overheat protection has activated, manually reset as follows.
 - a. Switch the power supply OFF at the fused spur.
 - b. Wait five minutes for the overheat cut out switch to reset.
 - c. Switch the power supply ON.

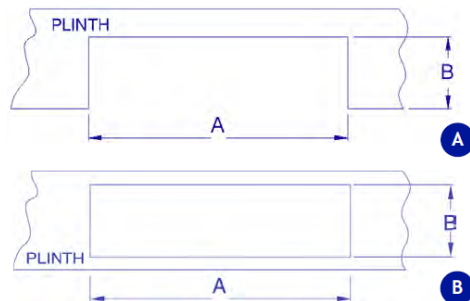
In the event of any difficulty, please contact us on 01245 324560.

Installation Guide

1. We recommend the use of a kneepad when installing this product. Cut the opening in the plinth to the size shown in the table. Use method A or B. For carpeted or laminated floors use method B with the product a minimum of 20mm above floor level.

Model	Width A	Height B*
SS2E W	475mm	96mm

* The overall height of the grille is 100mm. Use care when cutting the opening



User Guide SS2E W

User Information

- ❖ Your product is covered by a **free 5-year parts and labour guarantee**; please complete and return the Guarantee Registration Card to us as soon as possible to ensure that should you require assistance, we can help you quickly and more efficiently.