

SPARE PARTS EXPLODED VIEW
STORAGE ELECTRIC WATER HEATERS

Model

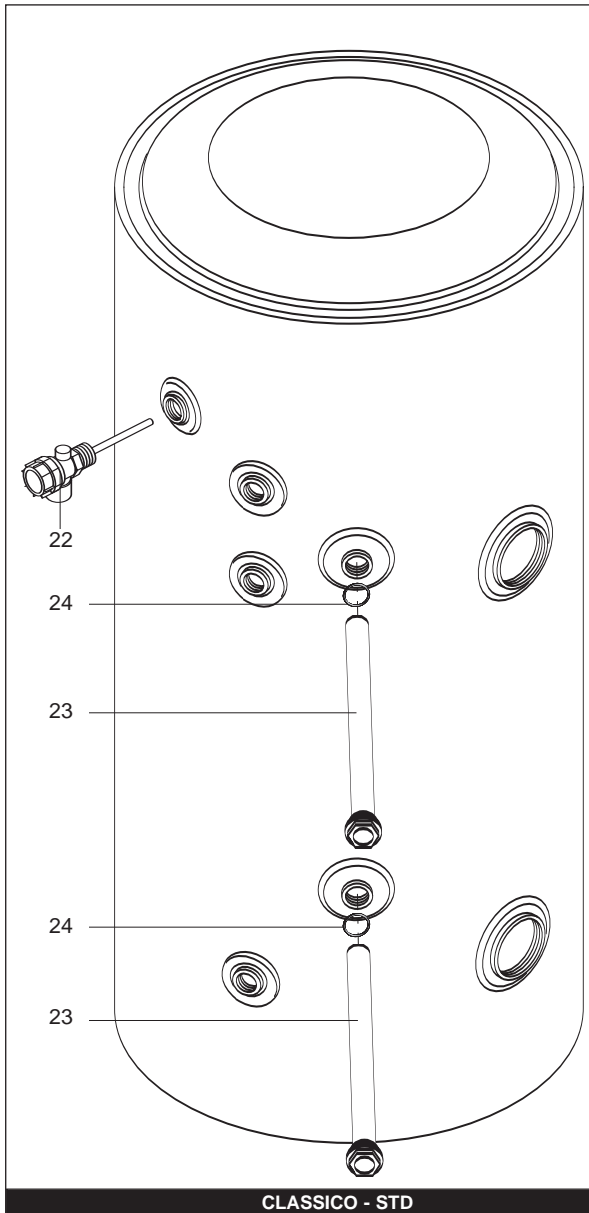
CLASSICO STD - STI

R8202845-02EN - Edition 02 - 09/02/2002

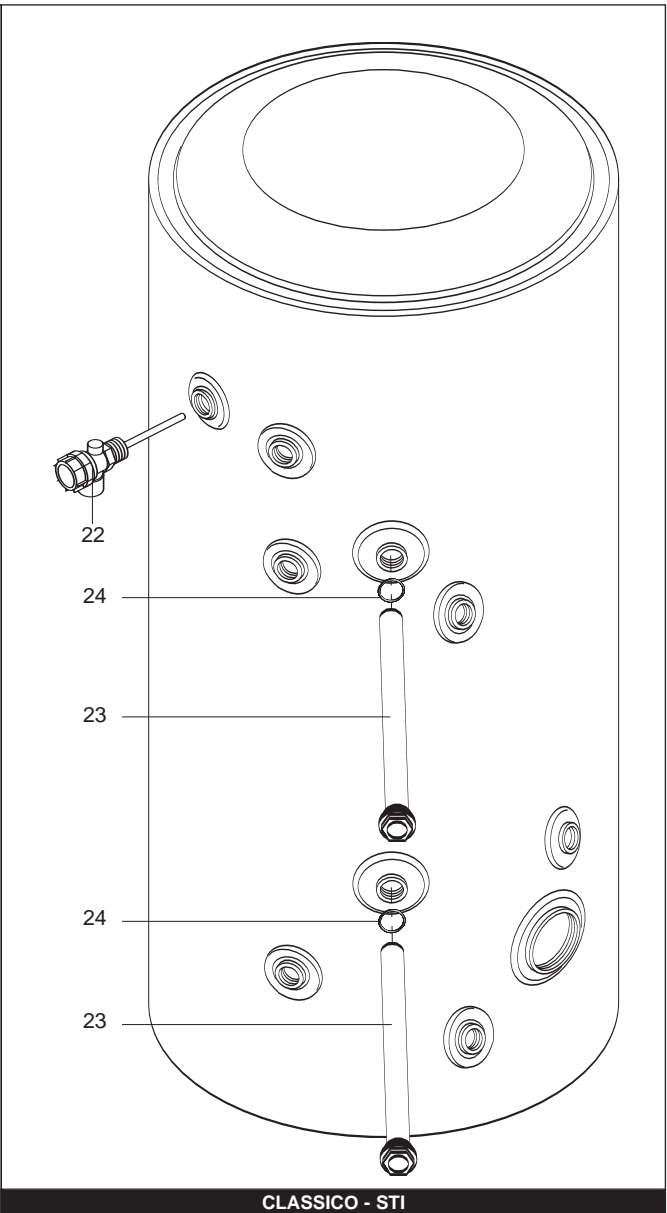


894 052		CLASSICO - STD 125	07/04	...
894 056		CLASSICO - STI 125	05/04	...
894 053		CLASSICO - STD 150	07/04	...
894 057		CLASSICO - STI 150	05/04	...
894 054		CLASSICO - STD 210	09/04	...
894 058		CLASSICO - STI 210	05/04	...
894 055		CLASSICO - STD 300	10/04	...
894 059		CLASSICO - STI 300	06/04	...

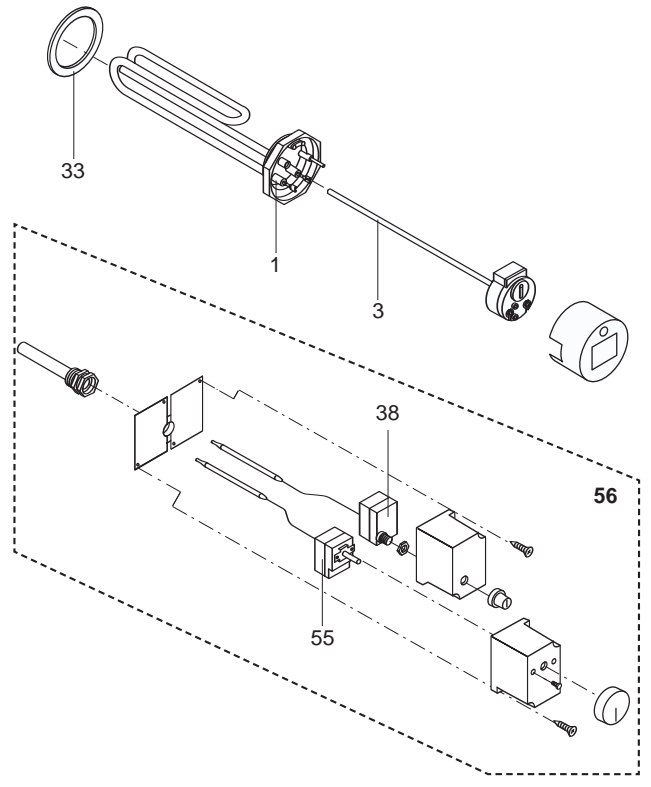
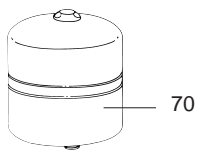
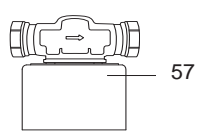
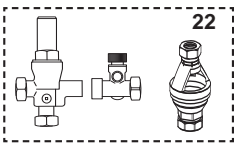
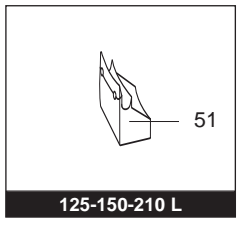
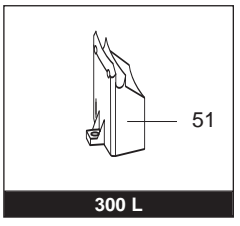
Reference	Ind.	Model type	Begin	End
-----------	------	------------	-------	-----



CLASSICO - STD



CLASSICO - STI





LIST OF THE ABBREVIATIONS

HW	: Hot water.
CW	: Cold water.
C	: Ceramic resistance (normal heating).
Ca	: Ceramic resistance (accelerated heating)
TP	: Immersion heater.
1F	: With fittings.
2F	: Without fittings.
3F	: With fittings and another outlet connection.
AMI	: With mixing valve.
SMI	: Without mixing valve.
PUISS	: Power of th appliance.
PN	: Appliance with normal pression.
LP	: Appliance with low pression.
PV	: Appliance with variable power.
PF	: Appliance with fixed power..

IDENTIFICATION PLATE

SERIAL NUMBER

E : 95 01 06500 4(from 01/93 to 06/95)
 _____ Sequential number
 _____ Month of manufacture : from 1 to 12 ⇒ January to December
 _____ Year of manufacture

E : 01 95 06500 4(from 07/95)
 _____ Sequential number
 _____ Year of manufacture
 _____ Month of manufacture : from 1 to 12 ⇒ January to December

OR
Ex: 003 126 0001 893077
 _____ Product reference
 _____ Sequential number
 _____ Manufacturing day Ex:126 day of the year
 _____ Year of manufacture

The indications mentioned on the prices, commercial or technical literature and the scheme are written for your guidance and are available at a given time. The CONSTRUCTOR retains the power to modify the presentation, the form, the size, the conception or the material of the products.